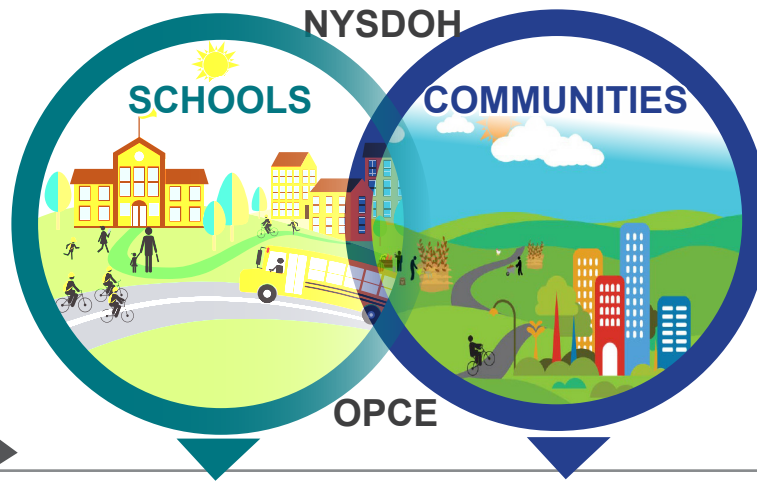




Creating Healthy Schools and Communities

1 INITIATIVE

Creating Healthy Schools and Communities (CHSC) is a five-year (2015-2020) public health initiative to reduce major risk factors of obesity, diabetes, and other chronic diseases in 85 high-need school districts and associated communities statewide. The **New York State Department of Health (NYSDOH)** provides grant funding to local organizations and county health departments. The goal is to implement multi-component evidence-based policies, place-based strategies, and promising practices to increase demand for and access to healthy, affordable foods and opportunities for daily physical activity for all New Yorkers. The **Obesity Prevention Center for Excellence (OPCE)**, led by **JSI Research & Training Institute, Inc. (JSI)** strengthens the CHSC Initiative's collective impact by providing technical assistance, training, resources, and a network to collaborate.



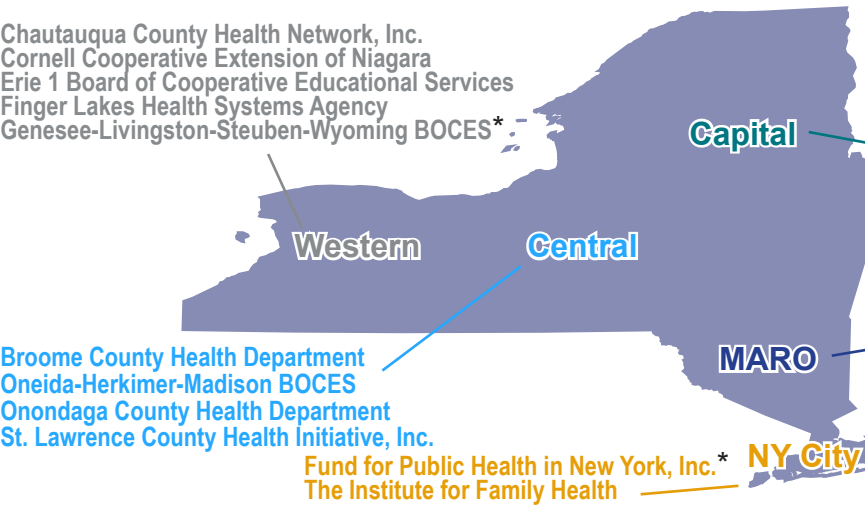
6 STRATEGIES

1. Revise, implement, and assess **local wellness policies** to improve the school environment.
2. Establish **Comprehensive School Physical Activity Programs (CSPAP)**.
3. Increase access to **healthy, affordable foods** and increase school districts' ability to meet federal **Healthy, Hunger-Free Kids Act of 2010 nutrition standards** for foods sold outside of school meals.
4. Increase access to **healthy, affordable foods** in communities.
5. Increase adoption and use of **food standards and procurement policies that increase healthy foods** in community sites and settings.
6. Adopt and implement Complete Streets policies, plans, and practices to increase access to **opportunities to walk, bike, and roll**.

26 GRANTEES

With grant funding, JSI[^] and its partners (Alliance for a Healthier Generation, PedNet, Action for Healthy Kids, The Food Trust) support the 25 grantees and their partners in CHSC efforts.

Visit OPCE online at: www.nyopce.com



Chautauqua County Health Network, Inc.
 Cornell Cooperative Extension of Niagara
 Erie 1 Board of Cooperative Educational Services
 Finger Lakes Health Systems Agency
 Genesee-Livingston-Steuben-Wyoming BOCES* -

Clinton County Health Department
Capital Roots
Glens Falls Hospital
North Country Healthy Heart Network, Inc.
Research Foundation for SUNY Cobleskill
Seton Health Foundation

Cornell Cooperative Extension of Sullivan County
Nepperhan Community Center, Inc.
County of Orange
Rockland County Department of Health
Western Suffolk BOCES*

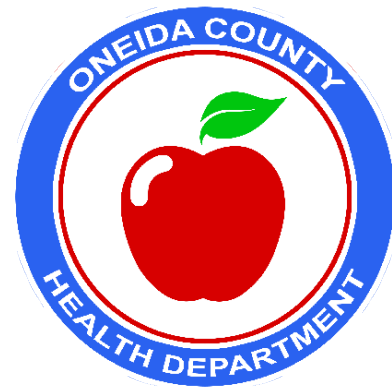
Broome County Health Department
Oneida-Herkimer-Madison BOCES
Onondaga County Health Department
St. Lawrence County Health Initiative, Inc.

Fund for Public Health in New York, Inc.*
The Institute for Family Health

* Organization has multiple grants
 ^ JSI is one of the 26 grantees



Oneida • Herkimer • Madison
BOCES



School Contact:

Deborah Spinella
School Health Policies Coordinator
Oneida Herkimer Madison BOCES



dspinella@oneida-boces.org



315-793-8544

Community Contact:

Melanie Adams
Program Coordinator
Oneida County Health Department



madams@ocgov.net



315-798-5888

Community Contact:

Debbie SeGuin
Public Health Educator
Oneida County Health Department



dseguin@ocgov.net



315-266-6121

PARTICIPATING SCHOOLS & COMMUNITIES 

- Adirondack Central School
- Holland Patent Central School
- Utica City Schools
- Remsen Central School
- Whitesboro Central School

