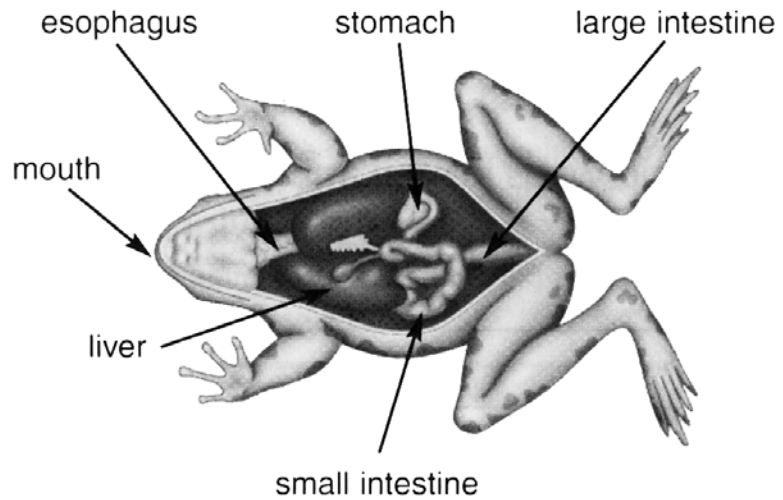


Name _____ Date _____

A Toad's Digestive System

Look at the picture and see how food passes through the body parts. The food is mixed in the stomach. The liver adds chemicals to the small intestine so the food can be broken down further and absorbed by the body. Solid waste passes through the large intestine and passes out of the body.



1. From the picture above, list three parts of the toad's digestive system.

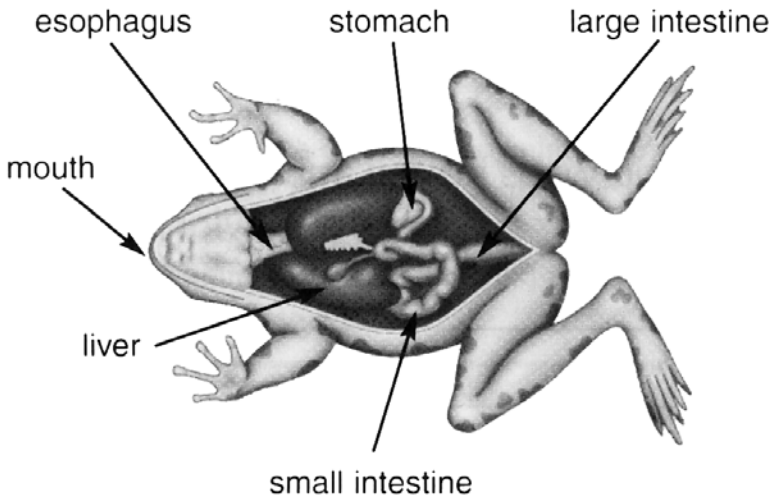
2. Describe how a toad digests its food.

3. Explain why it is important for a toad to digest its food?

Name _____ Date _____

A Toad's Digestive System (Answer Key)

Look at the picture and see how food passes through the body parts. The food is mixed in the stomach. The liver adds chemicals to the small intestine so the food can be broken down further and absorbed by the body. Solid waste passes through the large intestine and passes out of the body.



1. From the picture above, list three parts of the toad's digestive system.

Mouth, esophagus, stomach, liver, large intestine, and small intestine.

2. Describe how a toad digests its food.

First the stomach churns and mixes food. Then the liver adds chemicals to the small intestine. The food is broken down and absorbed. Finally waste products pass through the large intestine and out the body.

3. Explain why it is important for a toad to digest its food?

Food is necessary for energy and growth.(or any other appropriate answer.)