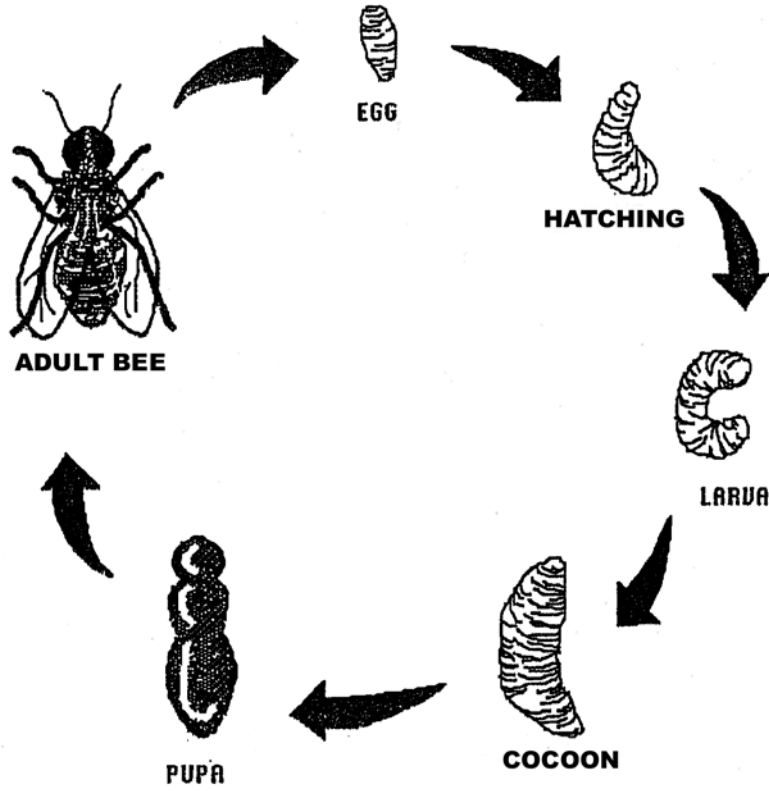


Name _____ Date _____

THE LIFE CYCLE OF THE HONEYBEE



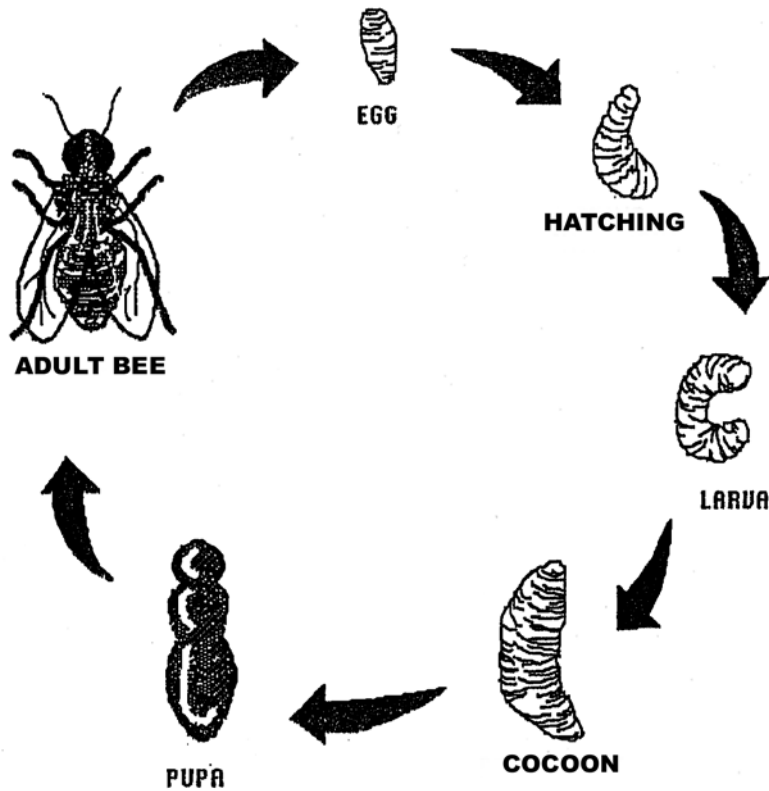
1. What is the stage in the bee's life cycle before it becomes an adult bee?

2. Identify two differences between the pupa and the adult bee?

3. What is a life cycle?

Name _____ Date _____

THE LIFE CYCLE OF THE HONEYBEE
Answer Key



1. What is the stage in the bee's life cycle before it becomes an adult bee?

The stage before adult bee is the pupa.

2. Identify two differences between the pupa and the adult bee?

The adult bee has wings, feet and antennae.

3. What is a life cycle?

The stages of growth and change in a living thing.
